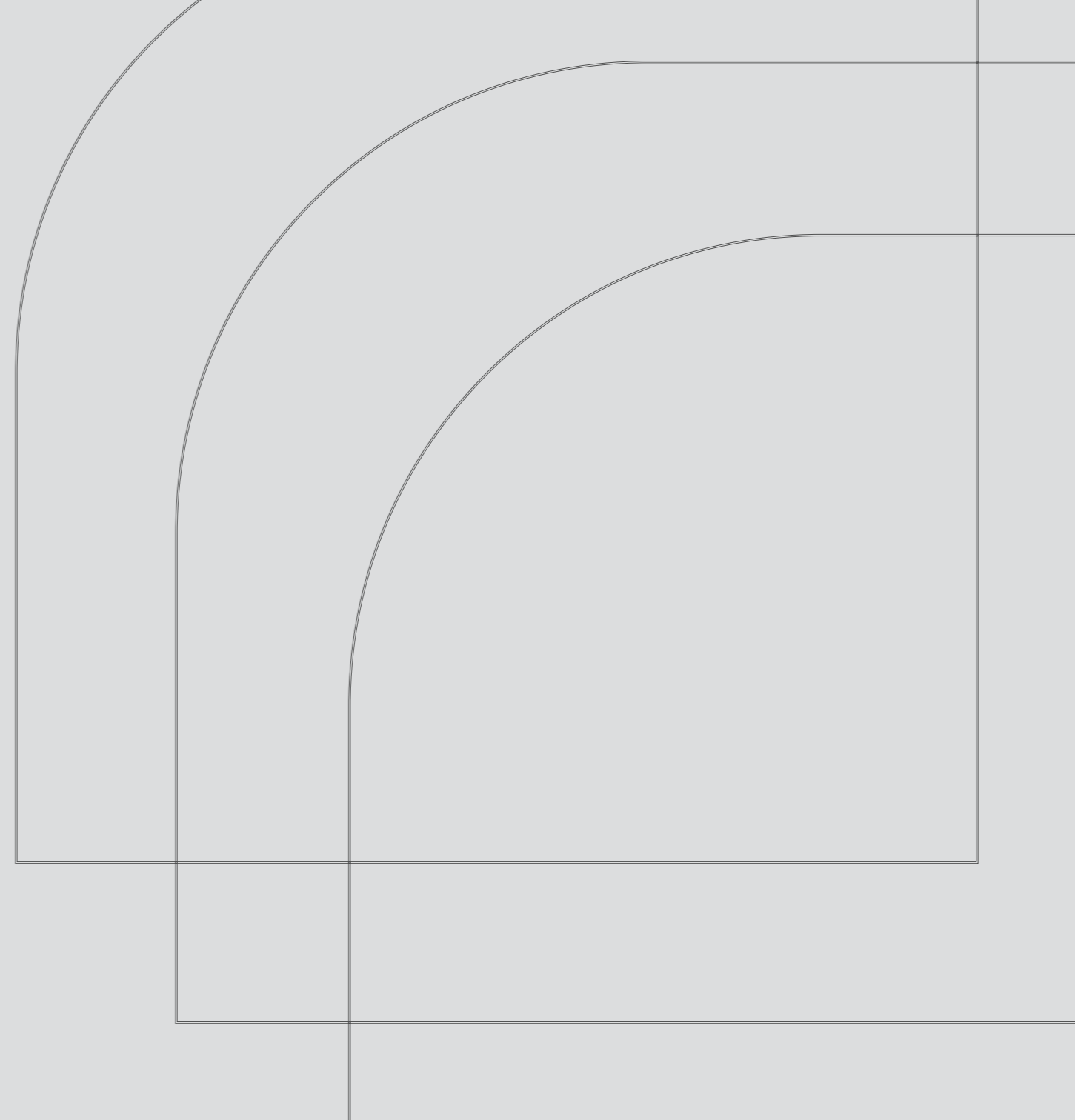


V Y E

NEO

**LIVE
UNLIMITED**



LIVE UNLIMITED

LIVE VYE

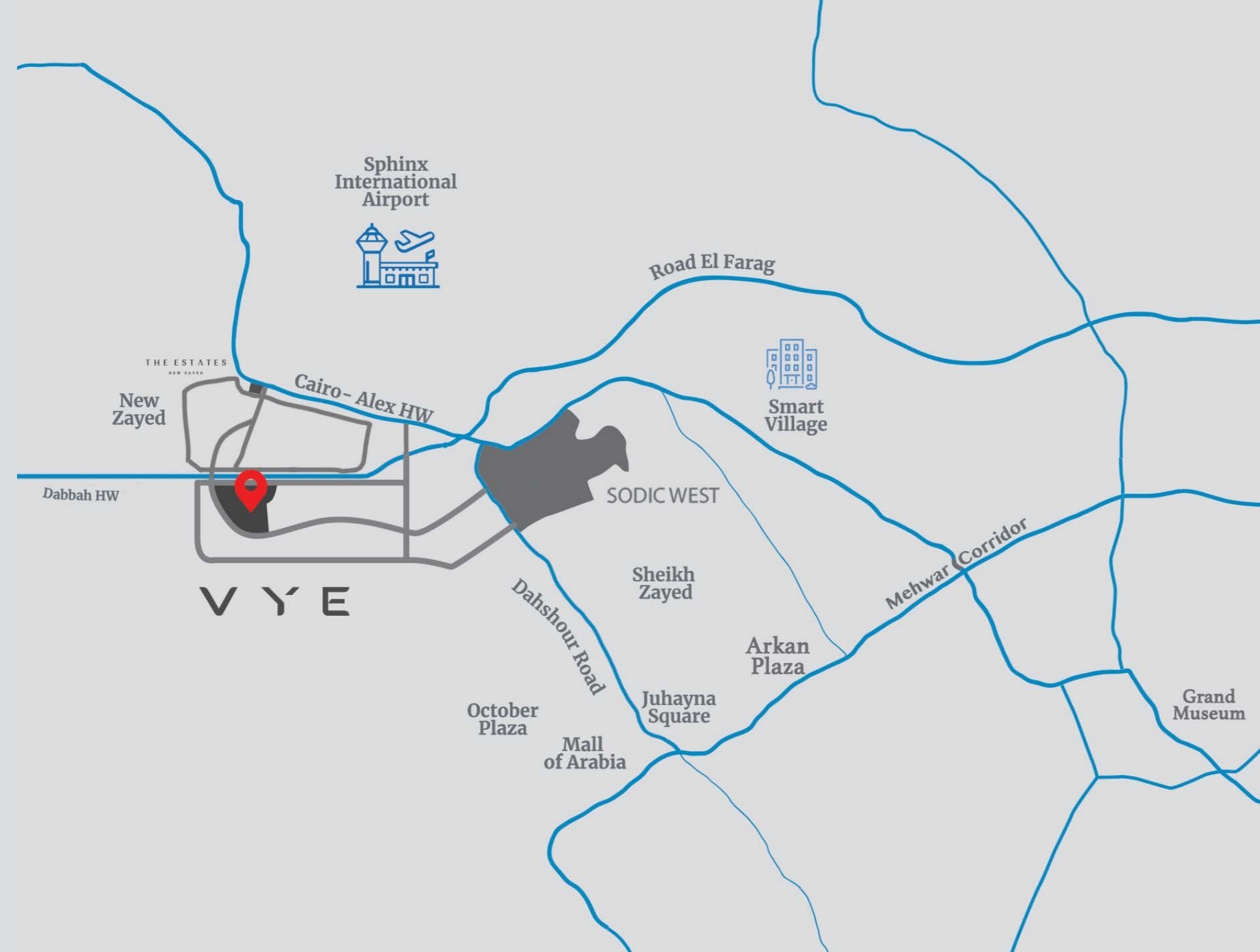
Experience future living at VYE in New Zayed and live in a community that brings you trendy homes and innovative amenities.





RESIDENCE OF THE FUTURE

A community designed by international renowned architects, bringing you everything within one place.



YOUR WORLD CONNECTED

A thriving, young destination located at the heart of New Zayed, conveniently connecting you to the city yet away from traffic. A destination made to give you the best of both worlds, connecting you to a better future. With access to Cairo - Alex road, live minutes away from the thriving SODIC West, The Sphynx International airport and Sheikh Zayed.

VYE HOMES

At VYE you will always find a perfect home for you and your family. Our homes gives you an innovative and easily adaptable experience, with its fine technology and architecture.



BOOST YOUR CREATIVITY

VYE's lush green areas and thriving, vibrant communal spaces are designed to inspire the community.





GET ENERGISED

Take your workout to the next level at VYE's Club S and try out the all-new gym, the sports fields, and tennis courts. Alternatively, you can enjoy the interconnected cycling paths that link the whole community together.



LIVE

INSPIRED



Disclaimer: The interior shot is only an indicative theme.



Disclaimer: The interior shot is only an indicative theme.



Disclaimer: The interior shot is only an indicative theme.



Disclaimer: The interior shot is only an indicative theme.



Disclaimer: The interior shot is only an indicative theme.

INNOVATIVE SPACES AT NEO

NEO revolutionizes efficiency and provides perfectly designed homes to make the most out of every square meter without sacrificing the views and spacious terraces



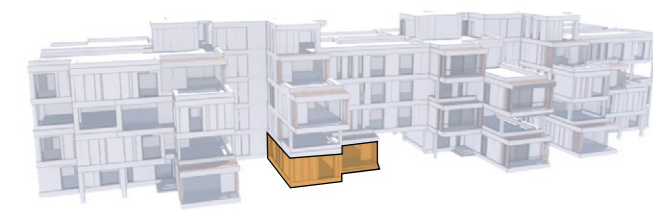


Apartment - 08

Total Gross Area 130.0 sqm	
Enclosed Area	121.9
Terraces	8.1

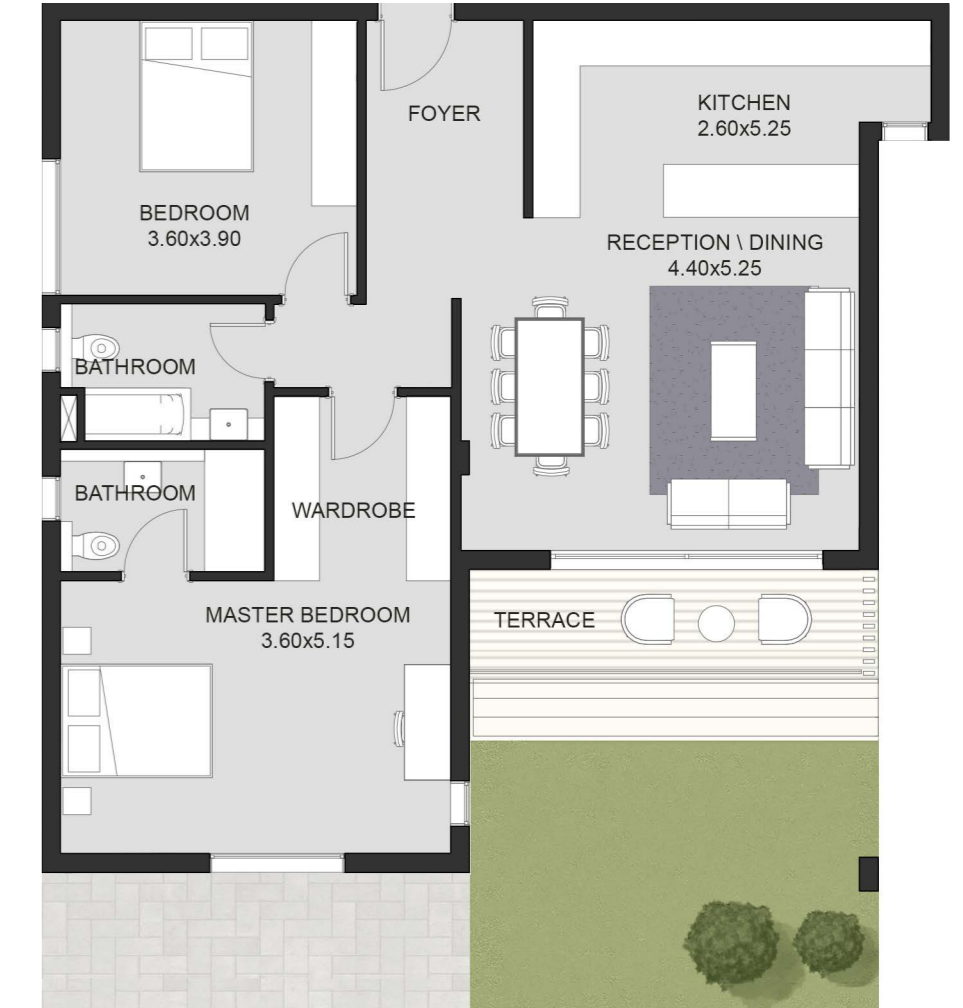


Street View



Apartment - 08.1

Total Gross Area 132.0 sqm	
Enclosed Area	123.9
Terraces	8.1



Garden View



Apartment - 09

Total Gross Area 172.5 sqm - First Floor

Enclosed Area	136.1
Terraces	29.7
Uncovered Terrace	6.8

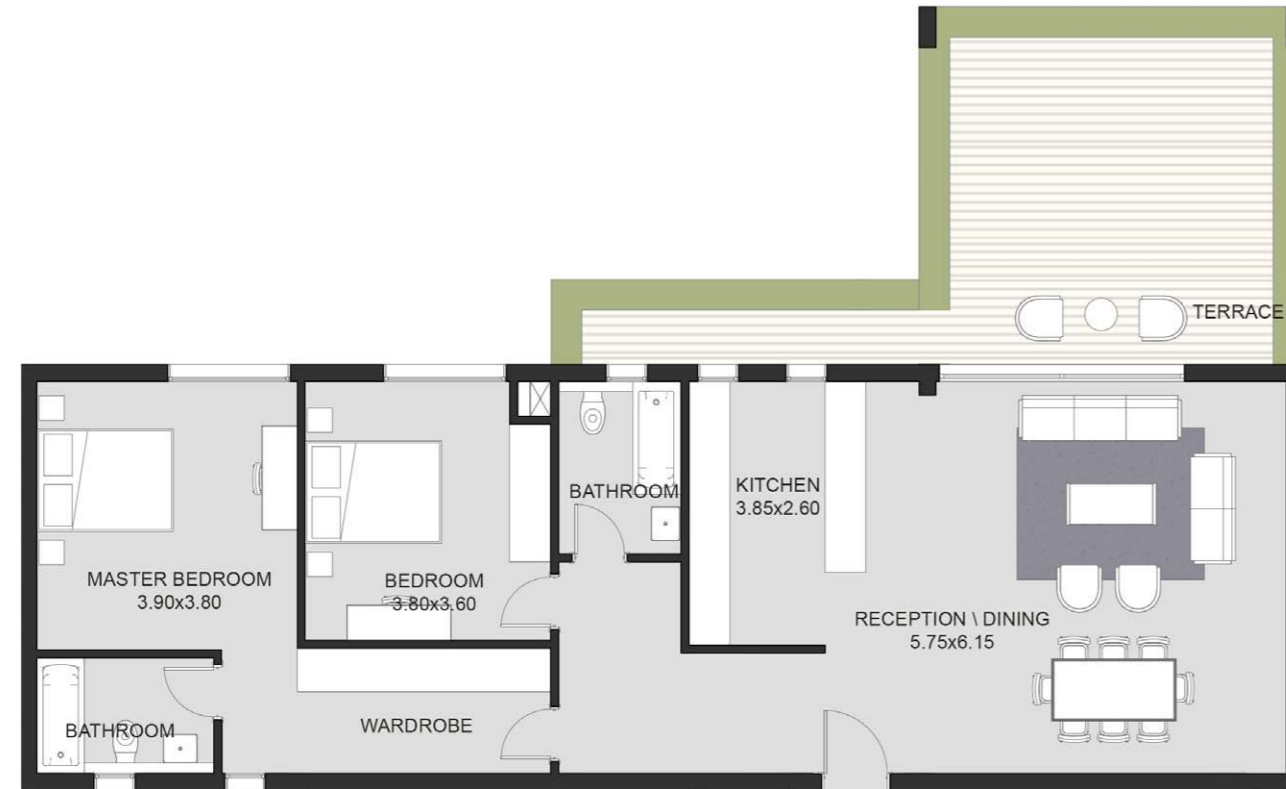
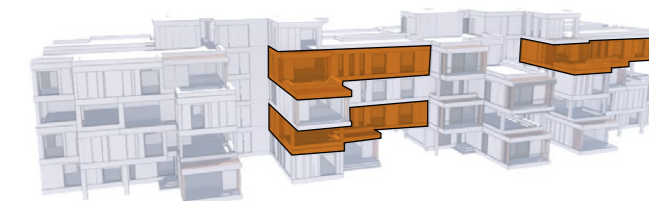
Total Gross Area 169.3 sqm - Third Floor

Enclosed Area	136.1
Terraces	8.5
Uncovered Terrace	24.7

Total Gross Area 180.6 sqm - Third Floor

Enclosed Area	136.1
Terraces	8.4
Uncovered Terrace	36.1

Street View



Apartment - 09.1

Total Gross Area 171.3 sqm

Second Floor

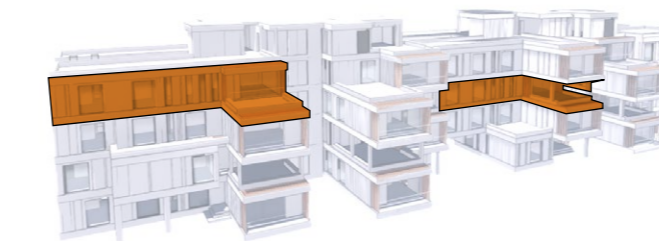
Enclosed Area	138.1
Covered Terraces	33.2

Total Gross Area 171.4 sqm

Third Floor

Enclosed Area	138.2
Uncovered Terraces	33.2

Garden View



Apartment - 10

Unit Components

- Nanny Room with Bathroom

Total Gross Area 198.1 sqm

First Floor

Enclosed Area	162.1
Covered Terrace	36.0

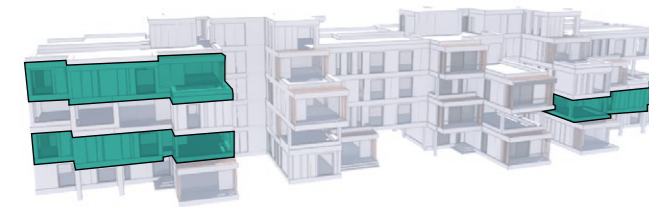
Total Gross Area 194.6 sqm

Third Floor

Enclosed Area	162.1
Covered Terrace	10.1
Uncovered Terrace	22.5



Street view



Apartment - 10.1

Unit Components

- Nanny Room with Bathroom

Total Gross Area 200.1 sqm

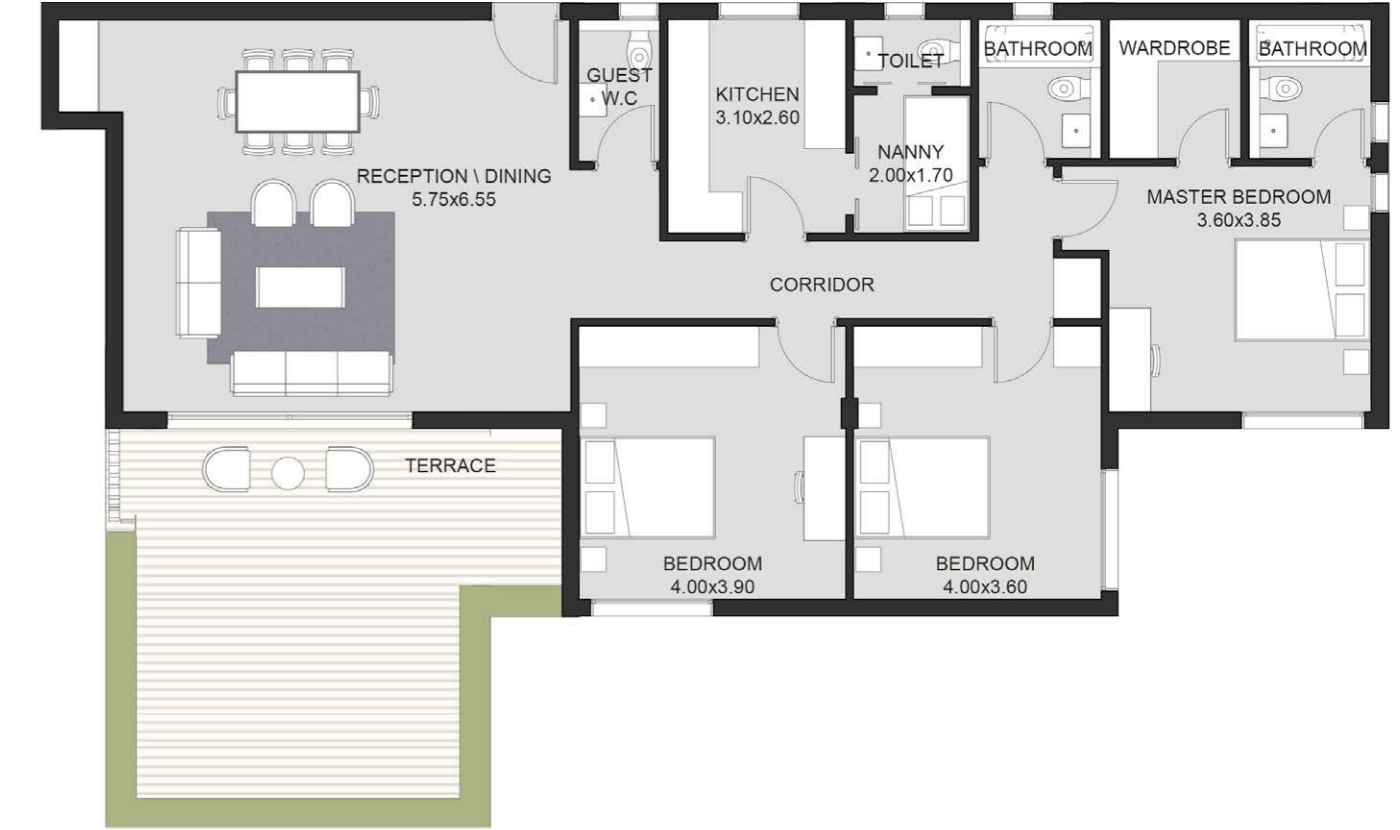
First Floor

Enclosed Area	164.1
Covered Terrace	36.0

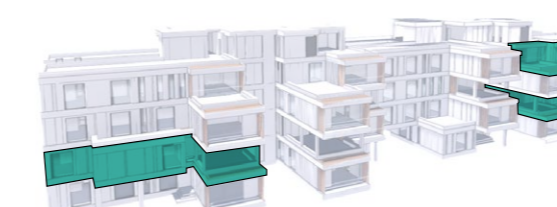
Total Gross Area 200.2 sqm

Third Floor

Enclosed Area	164.1
Covered Terrace	10.1
Uncovered Terrace	26



Garden View



Apartment - 11

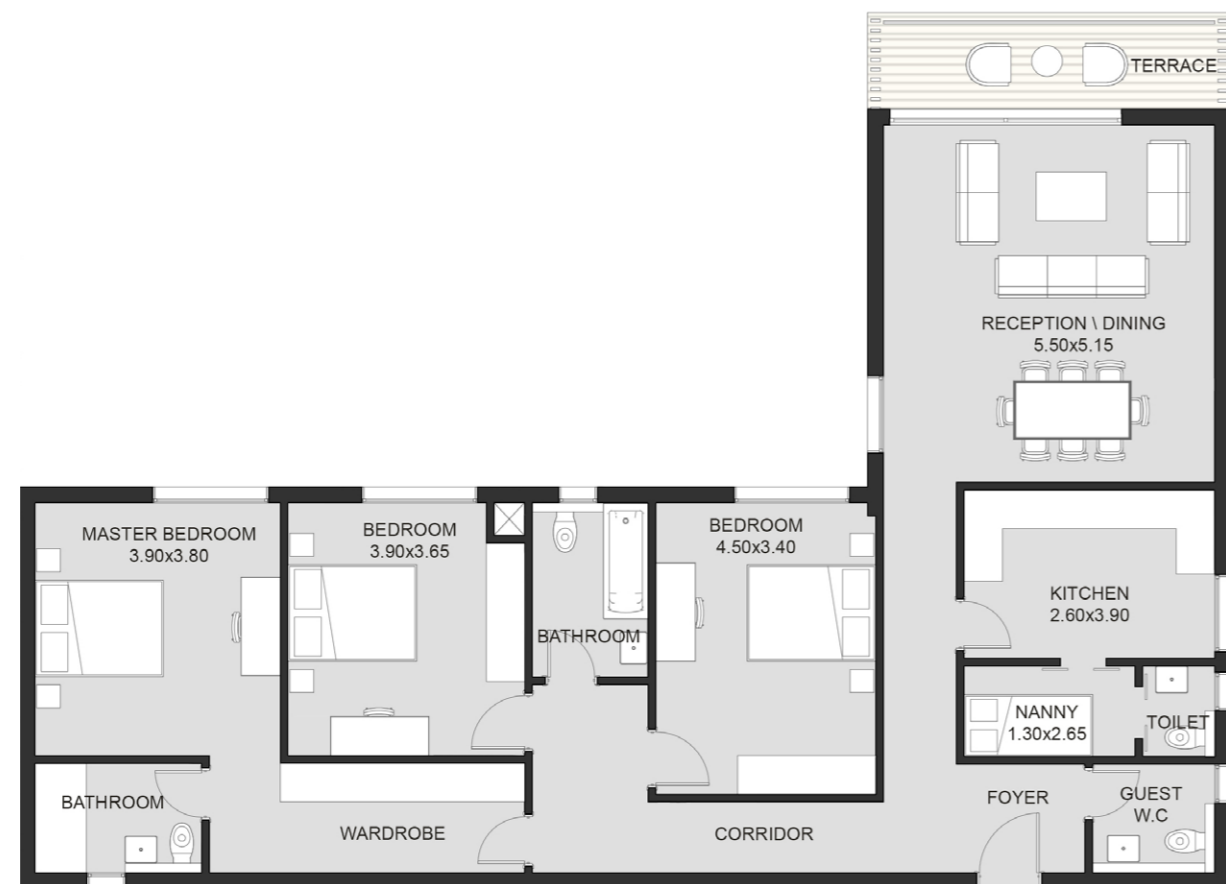
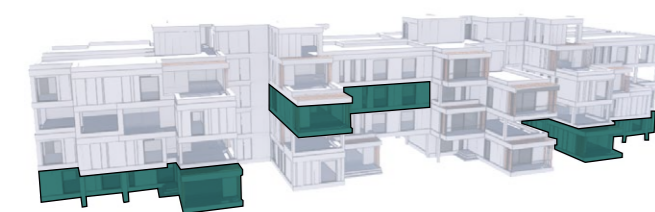
Unit Components

- Nanny Room with Bathroom

Total Gross Area 183 sqm

Enclosed Area	174.5
Covered Terrace	8.5

Street View



Apartment - 11.1

Unit Components

- Nanny Room with Bathroom

Total Gross Area 185 sqm
Ground, Third Floor

Enclosed Area	176.5
Covered Terraces	8.5

Total Gross Area 210.3 sqm
Second Floor

Enclosed Area	176.5
Covered Terraces	33.8

Garden View

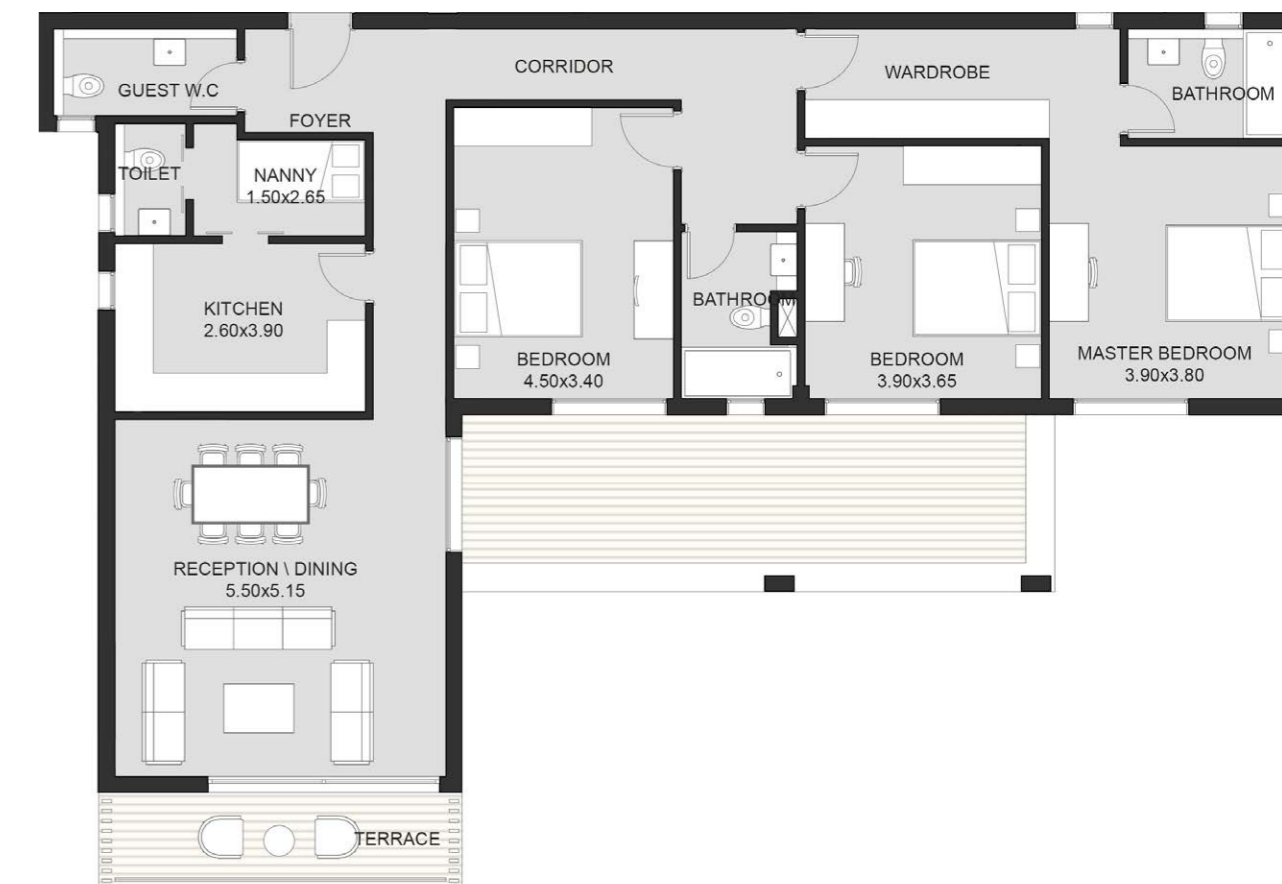


Total Gross Area 213.3sqm
First Floor

Enclosed Area	176.5
Covered Terraces	8.5
Uncovered Terrace	28.4

Total Gross Area 210.3 sqm
Second Floor

Enclosed Area	176.5
Covered Terraces	8.5
Uncovered Terrace	25.4



Apartment - 12

Total Gross Area 197.3 sqm

Enclosed Area	181.9
Covered Terraces	15.4

Total Gross Area 197.3 sqm

Enclosed Area	181.9
Covered Terraces	4.9
Uncovered Terrace	10.5

Street View



Duplex 1

Unit Components

- Family Living
- Nanny Room with Bathroom

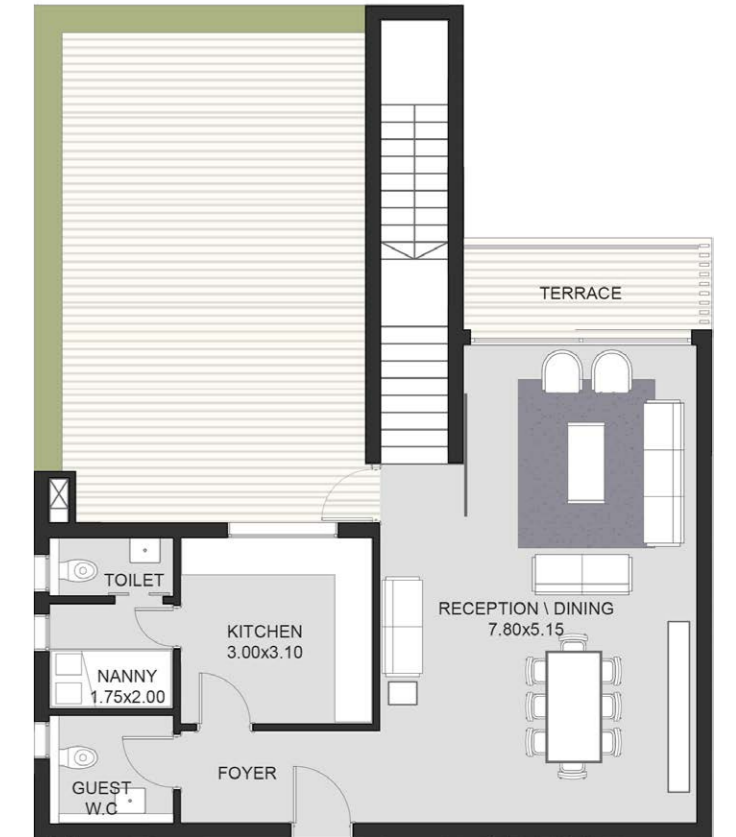
Total Gross Area 297.6 sqm
Ground and First

Enclosed Area	236
Covered Terraces	61.6

Total Gross Area 305.9 sqm
Second and Third

Enclosed Area	236
Covered Terraces	24.9
Uncovered Terrace	45.1

Street View



Duplex 1.1

Unit Components

- Family Living
- Nanny Room with Bathroom

Total Gross Area 301.7 sqm
Ground and First

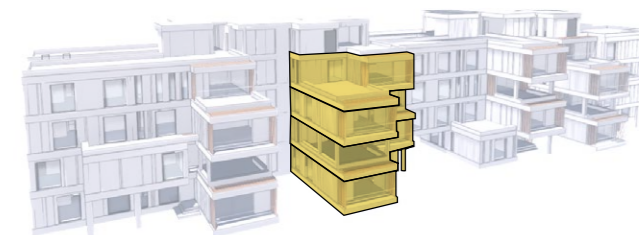
Enclosed Area	240.1
Covered Terraces	61.5

Total Gross Area 310.0 sqm
Second and Third

Enclosed Area	240.1
Covered Terraces	24.9
Uncovered Terrace	45.1



Garden View



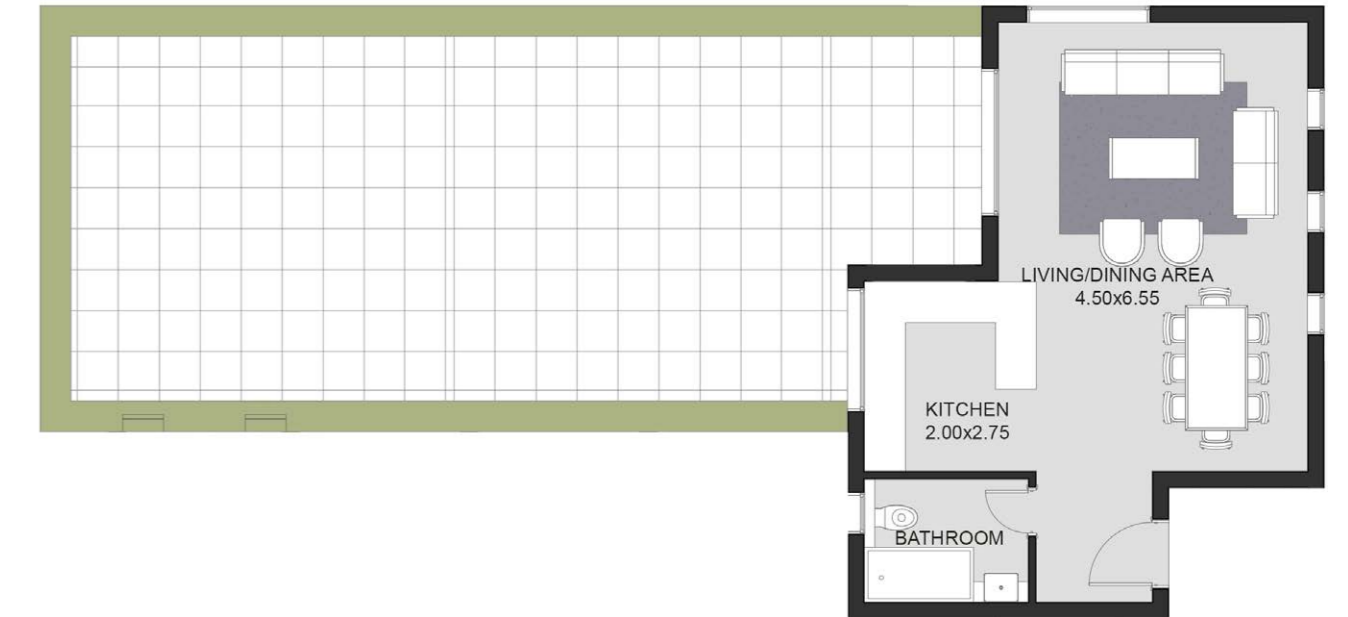
Annex04

Unit Components

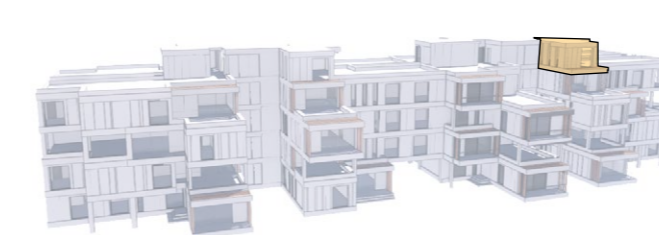
- Living & Dining
- Bathroom
- Kitchen

Total Gross Area 59.1 sqm

Open Roof Deck	81.5
----------------	------



Street View



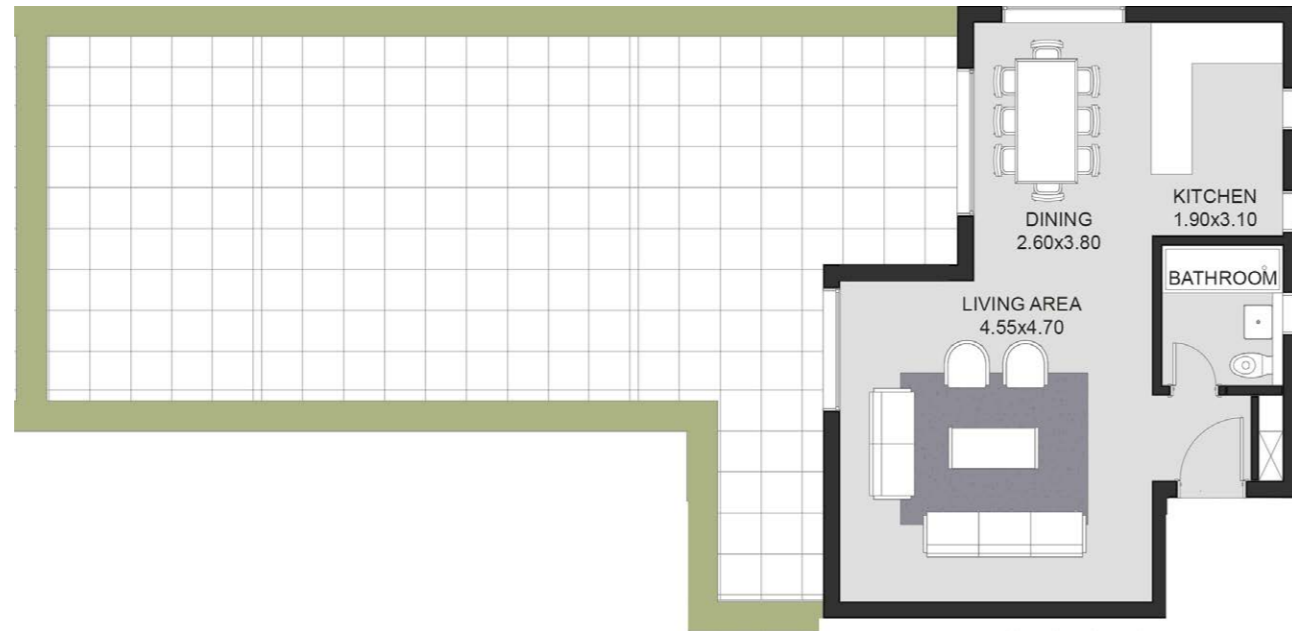
Annex05

Unit Components

- Living & Dining
- Bathroom
- Kitchen

Total Gross Area 60.2 sqm

Open Roof Deck 87



Street View



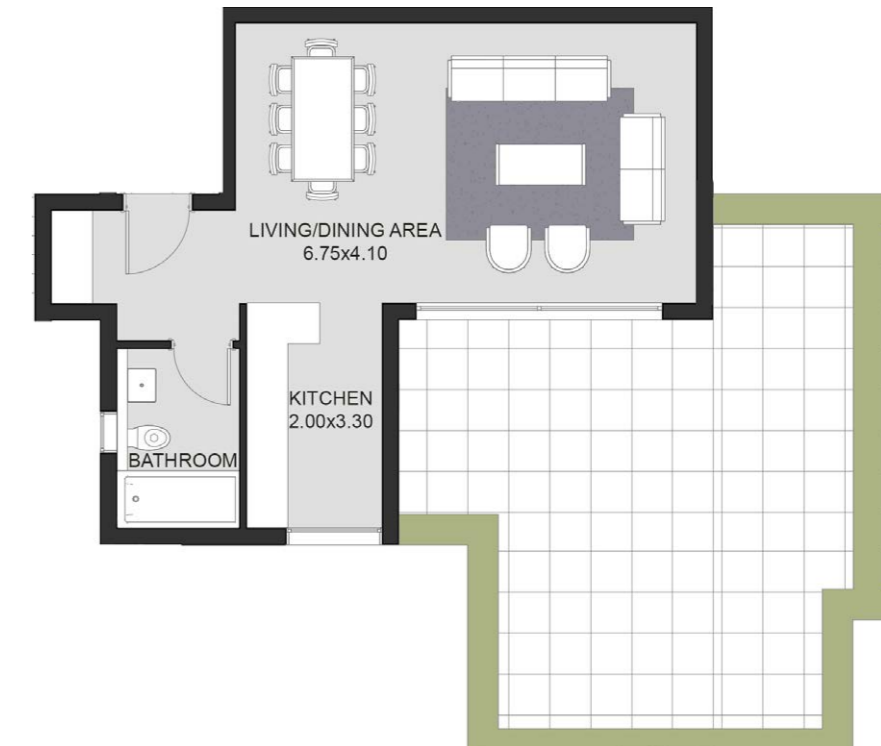
Annex06

Unit Components

- Living & Dining
- Bathroom
- Kitchen

Total Gross Area 61.7 sqm

Open Roof Deck 43.6



Garden View



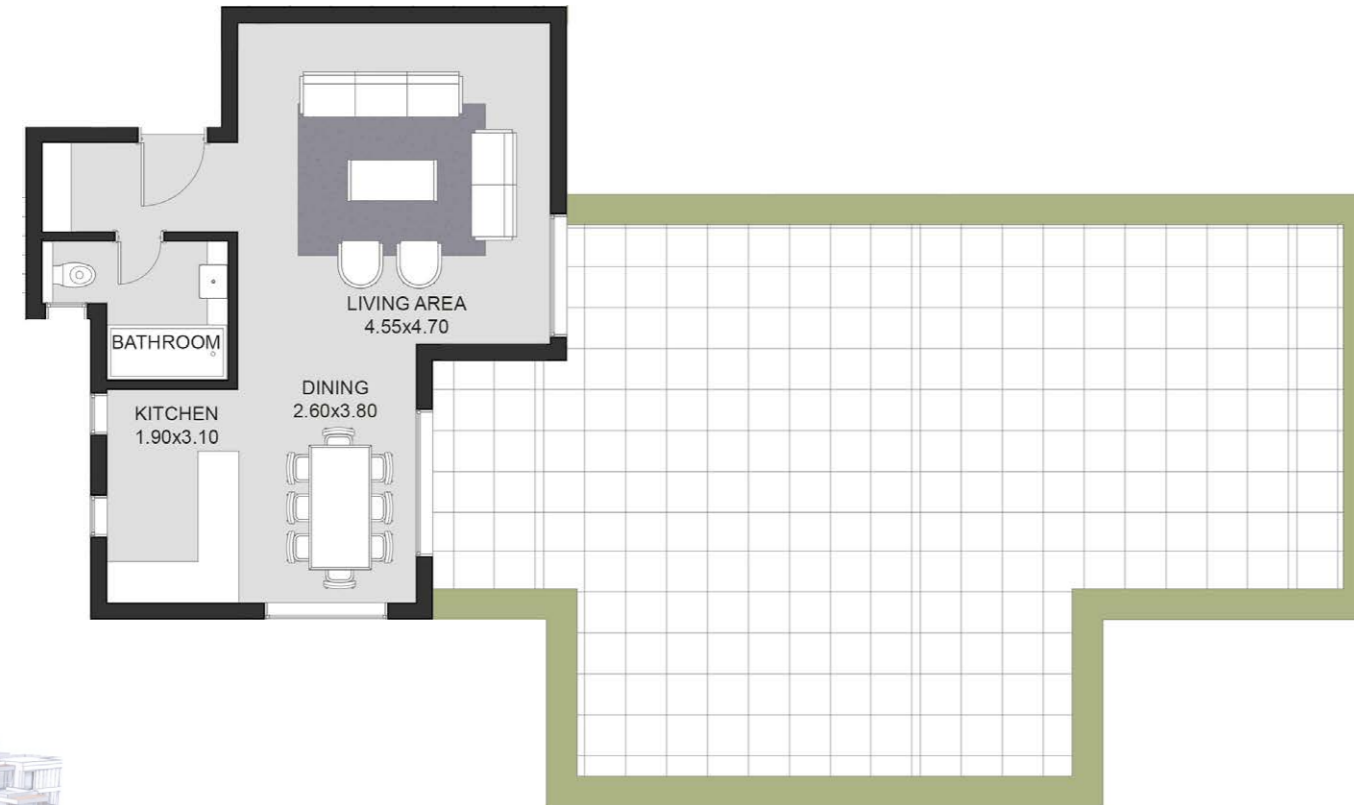
Annex07

Unit Components

- Living & Dining
- Bathroom
- Kitchen

Total Gross Area 63.4 sqm

Open Roof Deck 104



Garden View



ABOUT SODIC

Building on a history of more than two decades of successful operation in Egypt, SODIC is one of the country's leading real estate development companies. Based in Cairo and listed on the Egyptian stock exchange, SODIC brings award-winning large-scale developments to the market to meet Egypt's ever growing need for high quality housing, commercial and retail spaces. We pride ourselves on our passion for excellence and commitment to fostering long-term relationships with our clients, shareholders, business partners and employees, which has helped us grow to the corporation we are today.





BE A PART OF VYE

Call us on **16220** in Egypt | For International calls **+20238540185**

Visit our website **sodic.com**

For general information, enquiries, sales and customer services,
please email **info@sodic.com**

Or simply visit one of our Sales Centres:

Sheikh Zayed:
Km 38 Cairo-Alexandria Desert Road.

Heliopolis:
46 El-Thawra Street.

New Cairo:
Southern 90 Street, Plot #67, First Section City Centre, New Cairo.

Disclaimer:

: Diagrams are not to scale and are for illustrative purposes.

: SODIC reserves the right to make minor alterations.

: All rendering and other visual materials, designs, facades are for illustrative purposes only and are subject to change.

: SODIC reserves the right to use different finishing elements and sanitary fixtures models from those which are shown in renders and specification sheets.

: Final models used in our finishing are similar and subject to market and availability at the time of operations.

: This brochure contains material, which is owned by or licensed to SODIC. This material includes, but not limited to, the design, layout, look, appearance and graphics. Reproduction is prohibited.

